

INVERNO

1ª / E.M. A (Body Percussion)

Allegro non molto

I

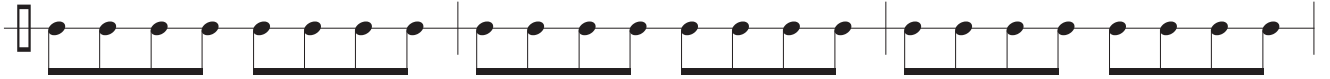
Antonio Vivaldi

ABBRACCIO FREDDO!

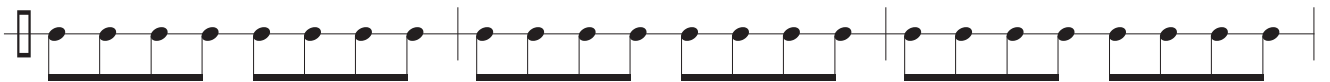
Corpo chiuso e poco a poco si apre!



4



7



10



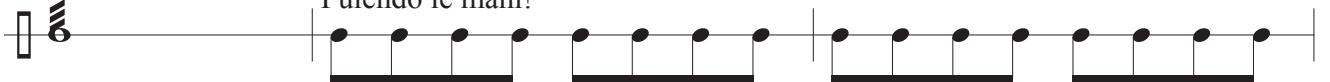
13



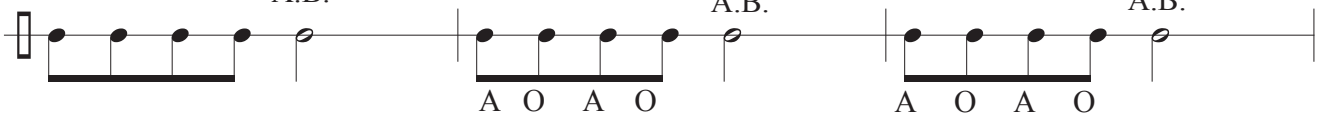
16



19



22



25



A.F. = Abbraccio Fredo

AB = Arco baleno

MD = movimento delle dita

M.P. = movimento con i piedi

MB = Movimento delle bracci

G.S. = Gamba sinistra / G.D. = Gamba destra

2
28

escala!

INVERNO

escala!

31

M.P.

Pulendo le mani

M.D.

34

M.P.

M.P.

M.P.

37

M.P.

A.F. ci sediamo pian-piano

40

43

PUNTI sul'aria

46

KARATE (8+8)

49

KARATE (4+4)

KARATE (2+2)

52

ONDA MECCANICA

56

A.B. + Piede D

A.B. + Piede S

A.B. + Piede D

A.B. + Piede S

A O A O

A O A O

A O A O

A O A O

60

ARCO ONDULATO

ARCOBALENO

B/P

(Simile)

II

Largo

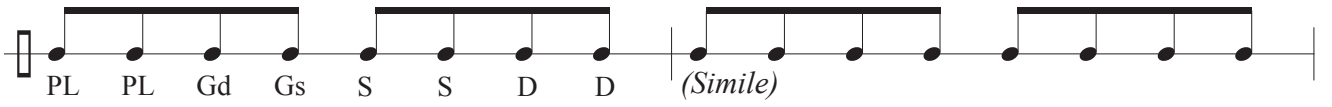


Cds Pd Ps Bt (*simile*)

66



Cd Cs Pd Ps (*Simile*)



PL PL Gd Gs S S D D (*Simile*)



PL PL Gd Gs (*Simile*)

76

